

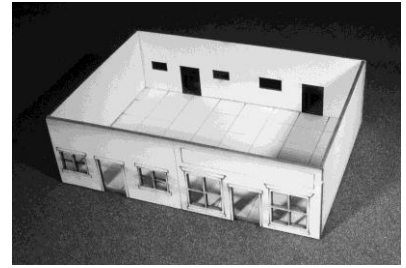
Foundations of War

15mm European House no.2 Assembly Instructions

Step 1

Trim out the ground floor parts (marked A) and the ground floor marked F1.

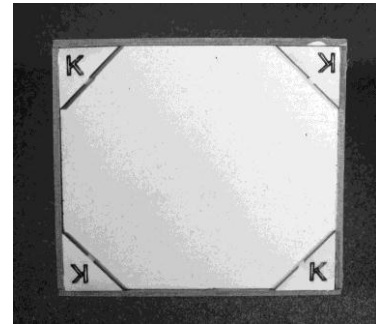
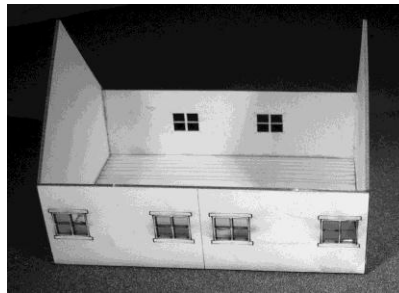
Attach the side panels to the front panels making sure the front panel overlaps the side leaving no visible seam when viewed from the front. (Pic 1) Pop the floor section (F1) in place once the glue is dry enough to hold but still has enough movement to ensure the house sits squarely



Steps 2+3

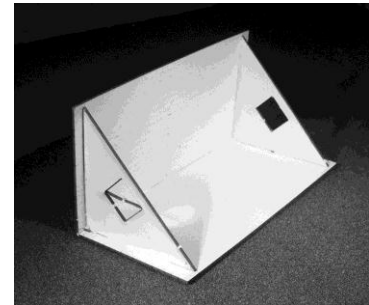
Assemble the upper floor as in step 1 using parts B and floor F2 (Pic 2) then when its had time to set, cut out the floor braces marked K and glue to the underside of the upper floor (note the position of the braces inside the walls (Pic 3) they should sit in the corners of the floor section and not over the walls.

This allows the top floor to sit on the ground floor and not slide around as the braces sit inside the walls.



Step 4

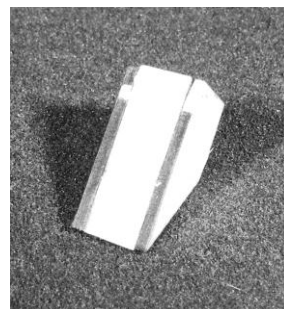
Trim out the roof braces and both roof sections marked D+E. Note that E is longer than D and will overlap at the top to minimise the roof join. Glue the roof sections together ensuring there is the overlap, then glue the braces on before it sets, position them about 3mm from the edge, this should allow you to slide the roof into the top floor and it won't wriggle round too much. You can check the positioning whilst it's still wet to allow any errors to be corrected. (Pic 4) Finish the top of the roof with the buff coloured ridge tile strips and it should hide the join nicely.



Step 5

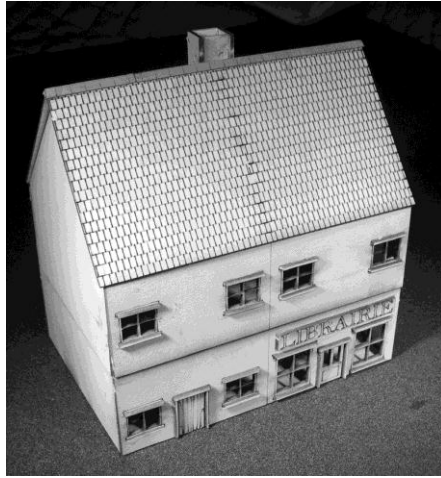
These following steps are all optional but will greatly improve the look of the finished house. The chimney is easily assembled using parts C glue them together and allow them to set, (Pic 5)

When dry using a sharp knife, run the blade along the slope of the base and trim off the excess, this allow the chimney to sit flush with the roof (Pic 6)



Step 6

Trim out the window sills marked H, the doors and the door frames. The easiest way to glue these on is to use slightly thinned glue (just enough to make it flow) and a pair of tweezers if you have sausage fingers like me, and to dip them in the pool of thinned glue, then pop them in place. It should look like this (Pic 7)



That's it done, in the end it should look like this.

