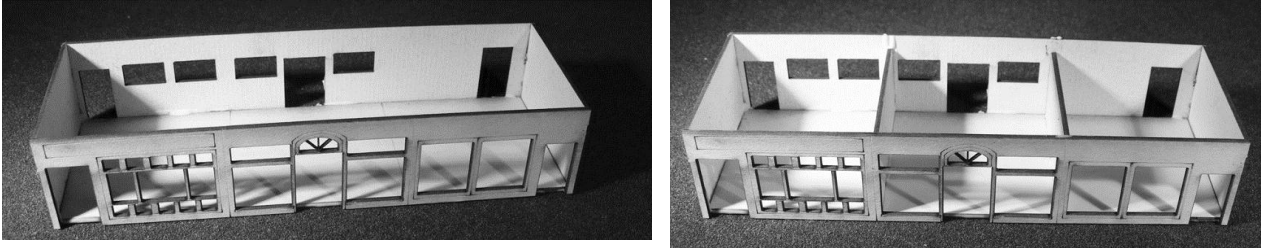


Foundations of War

15mm European House no.4 Assembly Instructions

Step 1

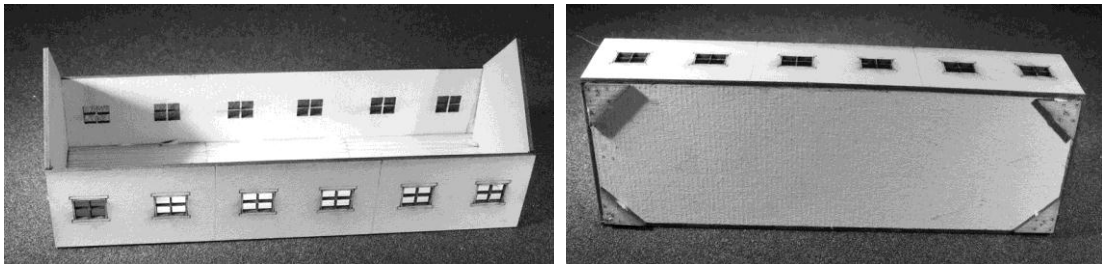
Trim out the ground floor parts (marked A, B & C) the floor section marked Ground Floor and two interior walls. Attach the side panels to the front panels making sure the front panel overlaps the side leaving no visible seam when viewed from the front (Pic 1) Pop the floor section in place once the glue is dry enough to hold but still has enough movement to ensure the house sits squarely, then glue the internal walls to add strength and to divide the houses (Pic 2)



Steps 2+3

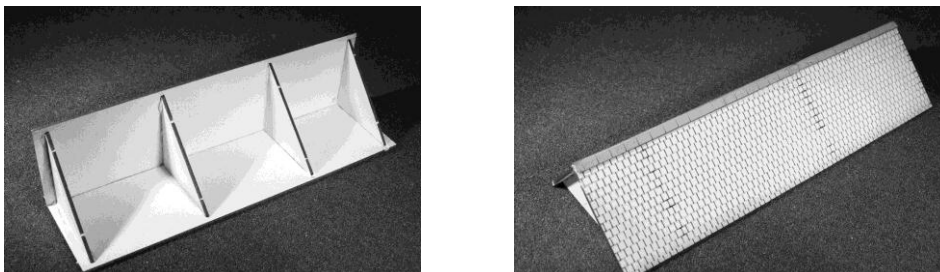
Assemble the First floor as in step 1 using parts D,E and F and the floor section marked Top floor (Pic 3) when its had time to set, cut out the floor braces marked K and glue to the underside of the upper floor (note the position of the braces inside the walls (Pic 4) they should sit in the corners of the floor section and not over the walls.

This allows the top floor to sit on the ground floor and not slide around as the braces sit inside the walls. Then pop in the last two interior walls.



Step 4

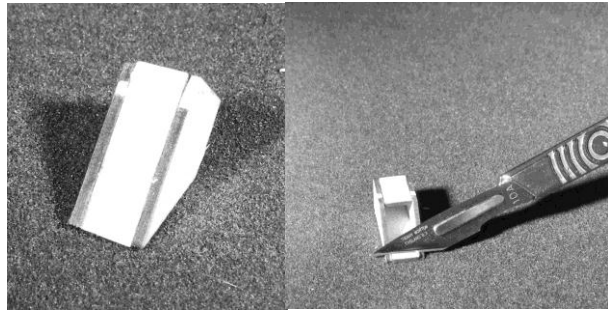
Trim out the roof braces and the roof section. Glue the braces on and before it sets, position them about 3mm from the edge, this should allow you to slide the roof into the top floor and it won't wriggle round too much. Then add the two middle sections in line with the dividing walls. You can check the positioning whilst it's still wet to allow any errors to be corrected. (Pic 5) Finally cap off the roof with the roof strip (buff coloured card, trim to length, you might find it easier to fold it over a steel ruler to help it bend) (Pic 6)



Step 5

These following steps are all optional but will greatly improve the look of the finished house. The chimney is easily assembled using parts L glue them together and allow them to set, (Pic 7)

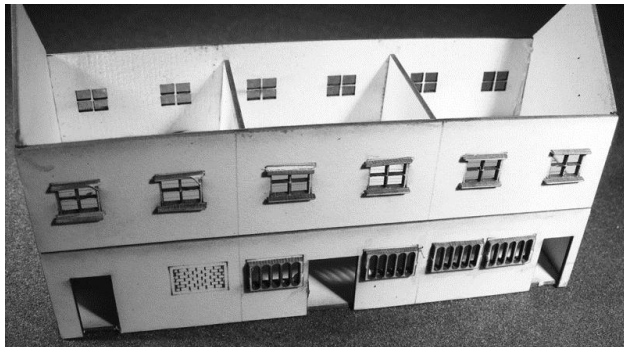
When dry using a sharp knife, run the blade along the slope of the base and trim off the excess, this allow the chimney to sit flush with the roof (Pic 8) Do this twice as there are two chimneys



Step 6

Trim out the window sills marked W, the doors and the shutters. The easiest way to glue these on is to use slightly thinned glue (just enough to make it flow) and a pair of tweezers if you have sausage fingers like me, and to dip them in the pool of thinned glue, then pop them in place. The final thing to do is to add the grills on the back downstairs windows, to stop unscrupulous opportunists from stealing the wares.

It should end up like this (Pic 9 & 10)



That's it done, in the end it should look like this.

